



烨联钢铁（山东）有限公司

YELIAN STEEL (SHANDONG) Co., Ltd

Enterprise Brochure
企业宣传册

电话/Tel: +86-0531-55581008

传真/Fax: +86-0531-55581008

网址/Website: <https://www.sdyusco.com>

邮箱/Email: fengmu@sdyusco.com

地址: 山东省济南市高新区经十路2000号舜泰广场2号楼912室

Address: Room 912, Shuntai Square Plaza, Gaoxin District, Jinan, Shandong, China

——诚信/开拓/创新/服务/求真/务实——

Integrity / development / innovation / service / truth-seeking / pragmatic

公司介绍

Company introduction

YELIAN STEEL (SHANDONG) Co., Ltd. is located in Jinan, Shandong Province, China - a beautiful spring city. Qingdao port to the East, Tianjin to the north is located in the economic and industrial belt of Beijing, Tianjin and Hebei, with convenient transportation and developed logistics. Since its establishment, the company has been adhering to the group's business philosophy of "honest and trustworthy, win-win cooperation" and the working attitude of "no meticulous, serious and responsible" to achieve the steady and rapid growth of various businesses. Our company has become a first-class agent of steel plants such as TISCO, ZPSS (POSCO), JISCO, YONGJIN, Chengde, etc. And with the major steelworks to maintain a long-term good and stable relations of cooperation. Thus, we can ensure that our company has sufficient supply, complete varieties and superior price, which makes our company win many customers in the fierce market competition.

The company consists of import and export agency department, storage and transportation department, and fleet, and carries out professional import and export agency business in the mode of integrated operation from contract signing to shipment. The company's inventory is more than 10000 tons, and the company has professional logistics to provide you with one-stop services, such as looking at goods, ordering and delivering goods. Mainly engaged in stainless steel rolling plate / stainless steel profiles / stainless steel pipes and accessories, etc., now the annual inventory turnover is more than 7500 tons, involving more than 800 specifications of different varieties. The annual sales volume is over ten million yuan. The products are sold in accordance with national standards, applicable to engineering, coal mine, textile, power, boiler, machinery, military and other fields. Company with good reputation, high-quality products, strong strength, low prices to serve the majority of users. I would like to express my heartfelt thanks to the new and old friends and customers who have always given us care, support and help! And sincerely hope to establish a long-term and stable cooperative relationship with it, mutual benefit and common development.

We always adhere to the market-oriented, constantly expand the scale of the enterprise, improve the core competitiveness of the enterprise, and strive to create the best stainless steel brand and provide the most satisfactory service in the shortest time. The company manager and all staff are looking forward to new and old guests from all over the world to visit our company and guide our work



工厂场景

Factory scene



仓库加工

Warehouse processing

到访客户

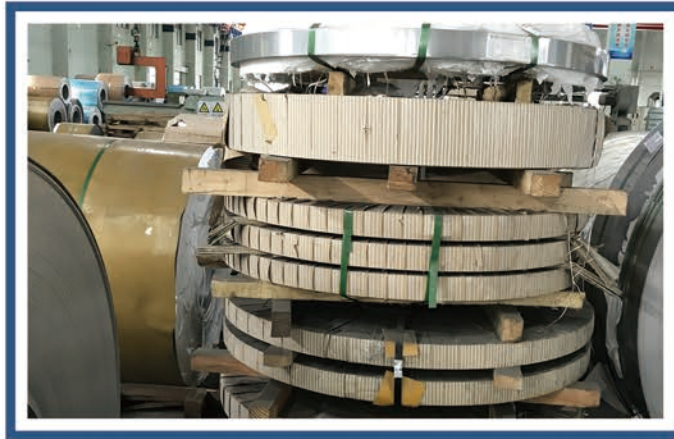
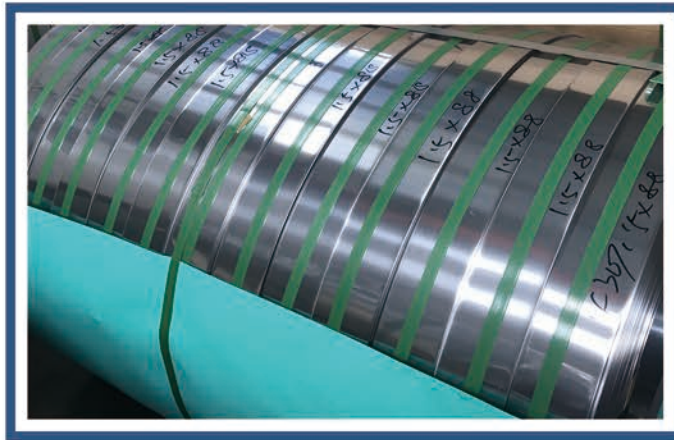
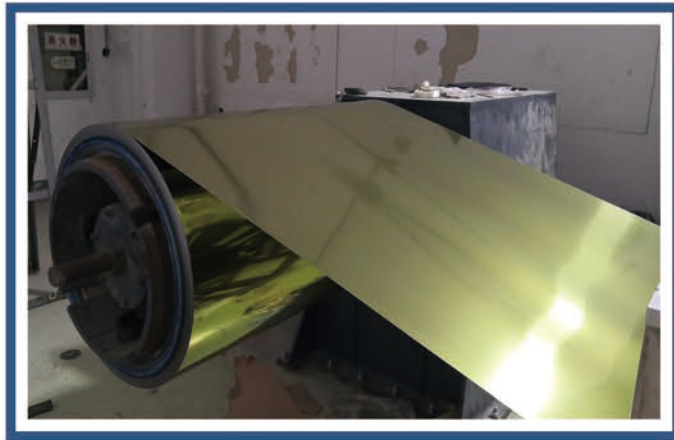
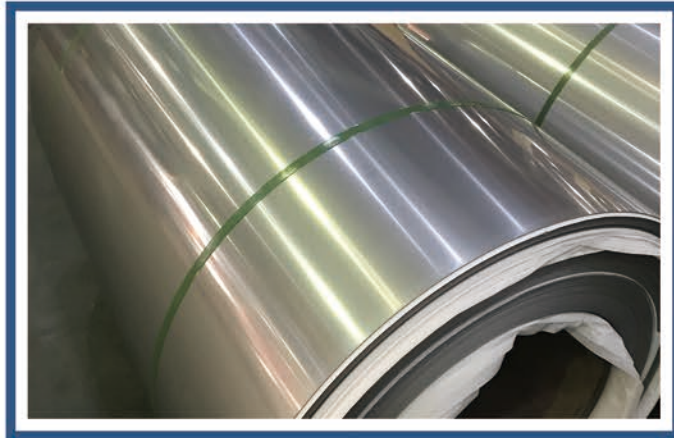
Visiting customers



产品展示

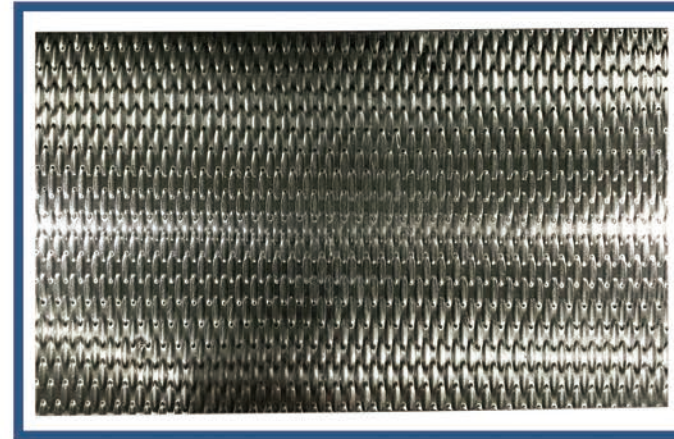
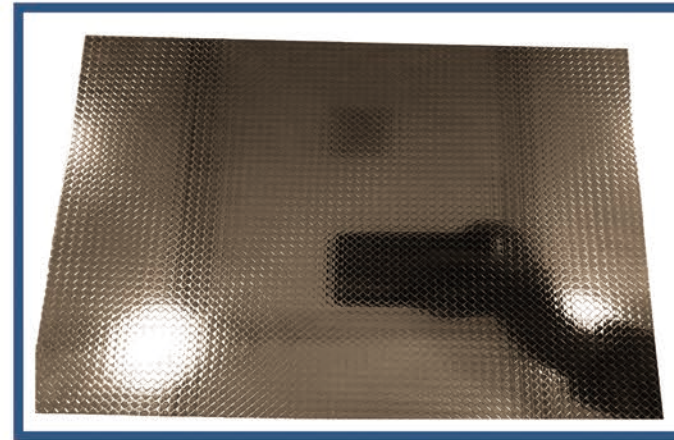
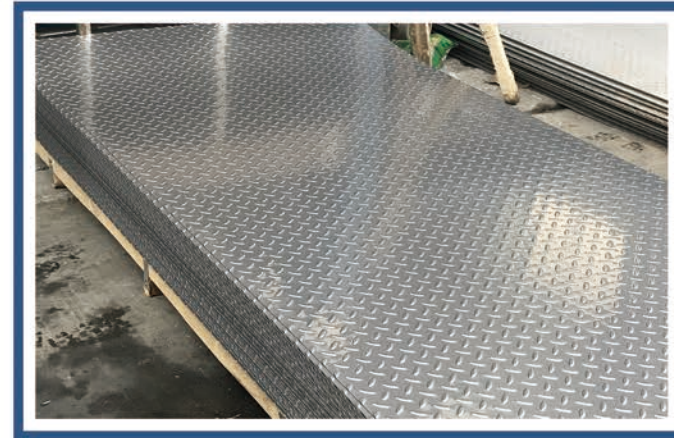
Product display

卷板加工/Coil processing

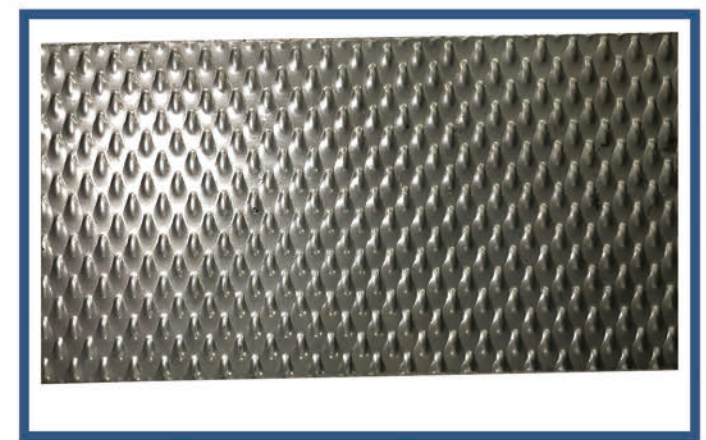
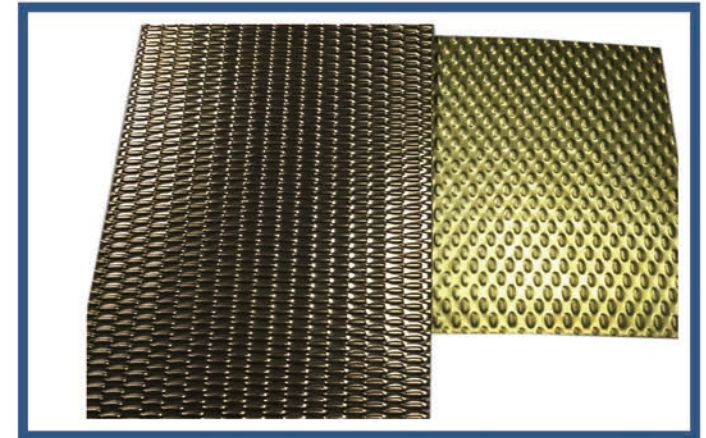


产品展示

Product display



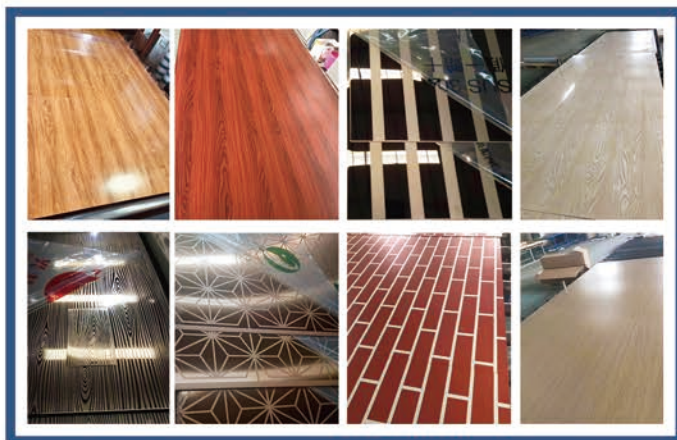
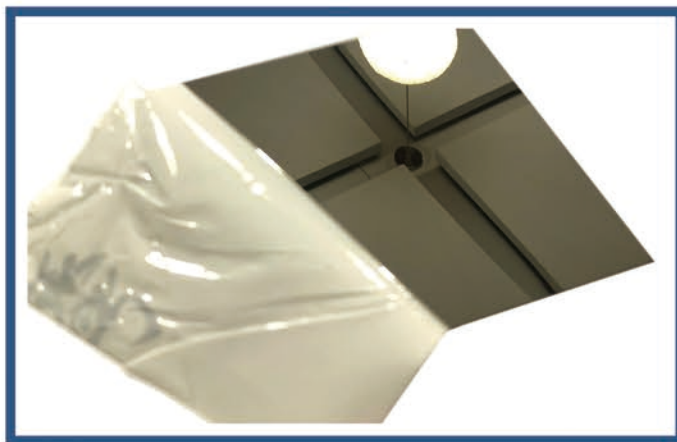
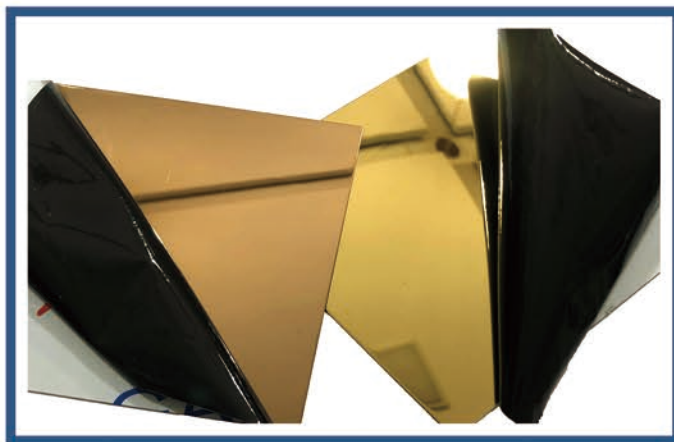
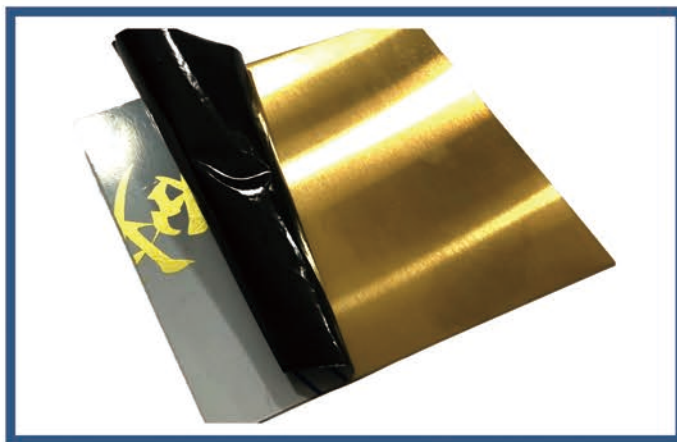
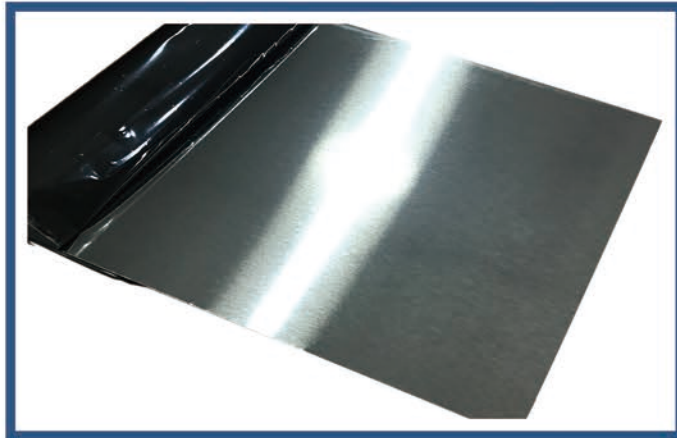
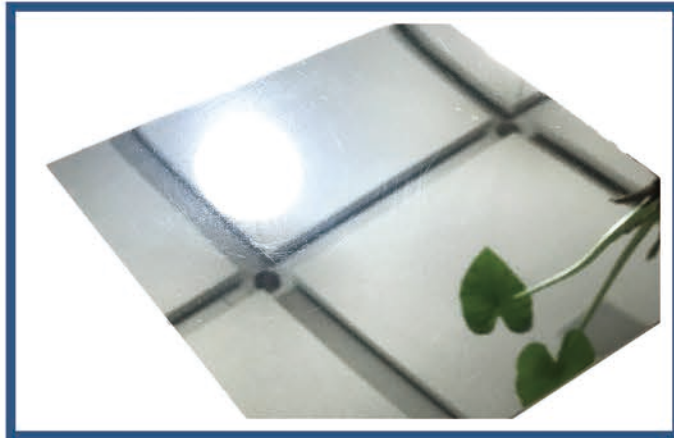
压花板/Matrix for embossing



产品展示

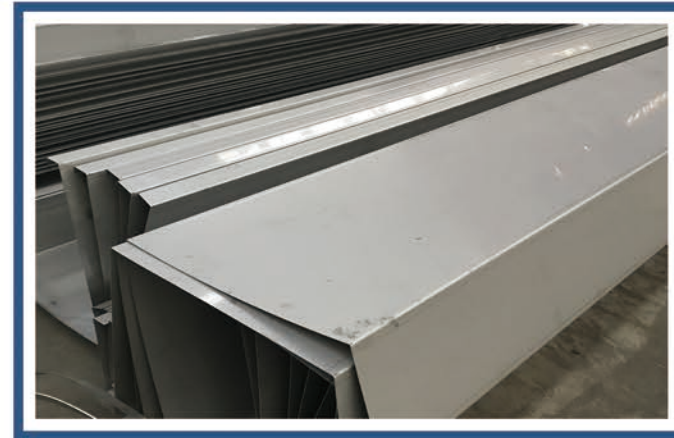
Product display

表面处理/Surface treatment

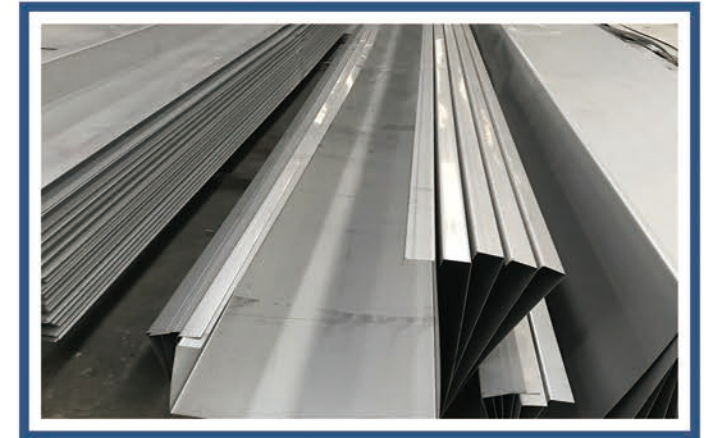


产品展示

Product display



激光剪切/Laser shearing



产品展示

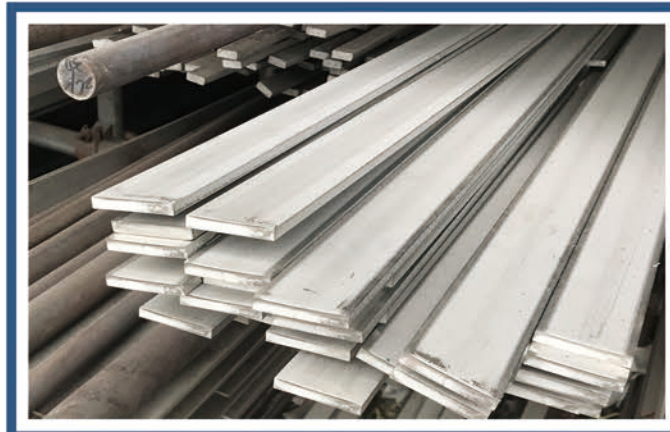
Product display

资质证书

Qualification certificate

不锈钢型材/Stainless steel profile

资质证书/Qualification certificate



产品规格

Product specification

槽钢/Channel

型号 Type	尺寸 Size (mm)			理计重量 weight (kg/m)	型号 Type	尺寸 Size (mm)			理计重量 weight (kg/m)
	H (高度) Height	B (宽度) Breadth	D (厚度) Thickness			H (高度) Height	B (宽度) Breadth	D (厚度) Thickness	
槽钢 (Channel) GB 707-88					槽钢 (Channel) GB 707-88				
5	50	37	4.5	5.438	32a	320	88	8	38.083
6.3	63	40	4.8	6.634	32b	320	90	10	43.107
6.5*	65	40	4.8	6.709	32c	320	92	12	48.121
8	80	43	5	8.045	36a	360	96	9	47.814
10	100	48	5.3	10.007	36b	360	98	11	53.466
12*	120	53	5.5	12.059	36c	360	100	13	59.118
12.5	125	5	5.5	12.318	40a	400	100	10.5	58.928
14a	140	58	6	14.535	40b	400	102	12.5	65.208
14b	140	60	8	16.733	40c	400	104	14.5	71.488
16a	160	63	6.5	17.24	轻型槽钢 (Light channel steel) YB 164-63				
16	160	65	8.5	19.752	16	160	64	5	14.2
18a	180	68	7	20.174	16a	160	68	5	15.3
18	180	70	9	23	18	180	70	5.1	16.3
20a	200	73	7	22.637	18a	180	74	5.1	17.4
20	200	75	9	25.777	20	200	76	5.2	18.4
22a	220	77	7	24.999	20a	200	80	5.2	19.8
22	220	79	9	28.453	22	220	82	5.4	21
24a*	240	78	7	26.86	22a	220	87	5.4	22.6
24b*	240	80	9	30.628	24	240	90	5.6	24
24c*	240	82	11	34.396	24a	240	95	5.6	25.8
25a	250	78	7	27.41	27	270	95	6	27.7
25b	250	80	9	31.335	30	300	100	6.5	31.8
25c	250	82	11	35.26	33	330	105	7	36.5
27a*	270	82	7.5	30.838	36	360	110	7.5	41.9
27B*	270	84	9.5	35.077	40	400	115	8	48.3
27C*	270	86	11.5	39.316	32c	50	32	4.4	4.84
28a	280	82	7.5	31.427	36a	65	36	4.4	5.9
28b	280	84	9.5	35.823	36b	80	40	4.5	7.05
28c	280	86	11.5	40.219	36c	100	46	4.5	8.59
30a*	300	85	7.5	34.463	40a	120	52	4.8	10.4
30b*	300	87	9.5	39.173	40b	140	58	4.9	12.3
30c*	300	89	11.5	43.883	40c	140	62	4.9	13.3

产品规格

Product specification

工字钢/I-Beam

型号 Type	尺寸 Size (mm)			理计重量 weight (kg/m)	型号 Type	尺寸 Size (mm)			理计重量 weight (kg/m)
	H (高度) Height	B (宽度) Breadth	D (厚度) Thickness			H (高度) Height	B (宽度) Breadth	D (厚度) Thickness	
工字钢(I-beam) GB 707-88					工字钢(I-beam) GB 707-88				
10	100	68	4.5	11.261	32c	320	134	13.5	62.765
12*	120	7	5	13.987	36a	360	136	10	60.037
12.6	126	74	5	14.223	36b	360	138	12	65.689
14	240	80	5.5	16.89	36c	360	140	14	71.341
16	160	88	6	20.513	40a	400	142	10.5	67.598
18	180	94	6.5	24.143	40b	400	144	12.5	73.878
20a	200	100	7	27.929	40c	400	146	14.5	80.158
20b	200	102	9	31.069	45a	450	150	11.5	81.42
22a	220	110	7.5	33.07	45b	450	152	13.5	87.485
22b	220	112	9.5	36.524	45c	450	154	15.5	94.55
24a*	240	116	8	37.477	50a	500	158	12	93.654
24b*	240	118	10	41.245	50b	500	160	14	101.504
25a	250	116	8	38.105	50c	500	162	16	109.354
25b	250	118	10	42.03	55a	500	166	12.5	105.355
27a*	270	122	8.5	42.825	55b	550	168	14.5	113.97
27b*	270	124	10.5	47.084	55c	550	170	16.5	122.605
28a	280	122	8.5	43.492	56a	560	166	12.5	106.316
28b	280	124	10.5	47.888	56b	560	168	14.5	115.108
30a*	300	126	9	48.084	56c	560	170	16.5	123.9
30b*	300	128	11	52.794	63a	630	176	13	121.407
30c*	300	130	13	57.504	63b	630	178	15	131.298
32a	320	130	9.5	52.717	63c	630	180	17	141.189
32b	320	132	11.5	57.741					

产品规格

Product specification

H型钢/H section steel

规格型号 Specification type	国标重量 (kg/m) Weight	规格型号 Specification type	国标重量 (kg/m) Weight
100*50*5*7	9.54	250*125*6*9	29.7
100*100*6*8	17.2	250*250*9*14	72.4
125*60*6*8	13.3	250*255*14*14	82.2
125*1125*6.8*9	23.8	294*200*8*12	57.3
150*75*5*7	14.3	294*302*12*12	85
148*100*6*9	21.4	298*149*5.5*8	32.6
150*150*7*10	31.9	300*150*6.5*9	37.3
175*90*5*8	18.2	300*300*10*15	94.5
175*175*75*11	40.3	300*305*15*15	106
194*150*6*9	31.2	340*250*9*14	79.7
198*99*4.5*7	18.5	344*348*10*16	115
200*100*5.5*8	21.7	346*174*6*9	41.8
200*200*8*12	50.5	350*175*7*11	50
200*204*12*12	56.7	350*350*12*16	137
244*175*7*11	44.1	388*402*15*15	141
248*124*5*8	25.8	390*300*10*16	107

规格型号 Specification type	国标重量 (kg/m) Weight	规格型号 Specification type	国标重量 (kg/m) Weight
394*398*11*18	147	506*201*11*19	103
396*199*7*11	56.7	582*300*12*17	137
400*200*8*13	66	588*300*12*20	151
400*400*13*21	172	594*302*14*23	175
400*408*21*21	197	596*199*10*15	95.1
414*405*18*28	233	600*200*11*17	106
428*407*20*35	284	606*201*12*20	120
440*300*11*18	124	692*300*13*30	166
446*199*8*12	66.7	700*300*13*24	185
450*200*9*14	76.5	800*300*14*22	191
458*417*30*50	41.5	800*300*14*26	210
482*300*11*15	115	890*299*15*23	213
488*300*11*18	129	900*300*16*28	243
496*199*9*14	79.5	912*302*18*34	286
498*432*45*70	60.5		
500*200*10*16	89.6		

产品规格

Product specification

角钢/Angle steel

等边角钢理重量表 Weight table of equilateral angle steel											
型号 Model	尺寸Size		理论重量 weight (kg/m)	型号 Model	尺寸Size		理论重量 weight (kg/m)	型号 Model	尺寸Size		理论重量 weight (kg/m)
	B	D			B	D			B	D	
2	20	3	0.889	6.3	63	8	7.469	10	100	16	23.257
		4	1.145			10	9.151			7	11.928
2.5	25	3	1.124	7	70	4	4.372	11	110	8	13.532
		4	1.459			5	5.697			10	16.69
3	30	3	1.373			6	6.406			12	19.782
		4	1.786			7	7.398			14	22.809
3.6	36	3	1.656			8	8.373	12.5	125	8	15.504
		4	2.163			5	5.818			10	19.133
		5	2.654			6	6.905			12	22.696
4	40	2.5	2.306	7.5	75	7	7.976			14	26.193
		3	1.852			8	9.03			10	21.488
		4	2.422			10	11.089	14	140	12	25.522
		5	2.976			5	6.211			14	29.49
4.5	45	3	2.088	8	80	6	7.376			16	33.393
		4	2.736			7	8.526			10	24.729
		5	3.369			8	9.658	16	160	12	29.391
		6	3.985			10	11.874			14	33.987
5	50	3	2.332	9	90	6	8.35			16	38.518
		4	3.059			7	9.656			12	33.159
		5	3.770			8	10.946	18	180	14	38.383
		6	4.456			10	13.476			16	43.542
5.6	56	3	0.889	10	100	12	15.94			18	48.634
		4	1.145			6	9.366			14	42.894
		5	1.45			7	10.83			16	48.68
		6	1.852			8	12.276	20	200	18	54.401
		4	3.907			10	15.12			20	60.056
6.3	63	5	4.822			12	17.898			24	71.168
		6	5.721			14	20.611				

不等边角钢理重量表 Weight table of unequal angle steel														
型号 Model	尺寸Size			理论重量 weight (kg/m)	型号 Model	尺寸Size			理论重量 weight (kg/m)	型号 Model	尺寸Size			理论重量 weight (kg/m)
	B	b	d			B	b	d			B	b	d	
2.5/1.6	25	16	3	0.912	7.5/5	75	50	5	4.808	11/7.0	110	70	8	10.946
			4	1.176				6	5.699				10	13.476
3.2/2	32	20	3	1.171				8	7.431				7	11.066
			4	1.522				10	9.098	12.5/8	125	80	8	12.551
4/2.5	40	25	3	1.484				5	5.005				10	15.474
			4	1.936	8.0/5	80	50	6	5.935				12	18.333
			3	1.687				7	6.848				8	14.16
4.5/28/3.0	45	28	4	2.203				8	7.745	14/9.0	140	90	10	17.475
		30	5	2.251				5	5.661				12	20.724
5/3.2	50	32	3	1.908	9/5.6	90	56	6	6.717				14	23.908
			4	2.494				7	7.756				10	19.872
5.6/3.6	56	36	3	2.153				8	8.779	16/10.0	160	100	12	23.592
			4	2.818				6	7.55				14	27.247
			5	3.466	10/6.3	100	63	7	8.722				14	30.838
			4	3.185				8	9.878				10	22.273
6.3/4	63	40	5	3.92				10	12.142	18/11.0	180	110	12	26.464
			6	4.638				6	8.35				14	30.589
			7	5.339	10/8.0	100	80	7	9.656				16	34.649
			4	3.57				8	10.946				12	29.761
7/4.5	70	45	5	4.403				10	13.476	20/12.5	200	125	14	34.436
			6	5.218	11/7.0	110	70	6	8.35				16	39.045
			7	6.011				7	9.656				18	43.588

产品规格

Product specification

无缝管规格表/Specification of seamless pipe/

Table with 3 columns: Outer diameter * wall thickness (外径*厚度), Outer diameter * wall thickness (外径*厚度), Outer diameter * wall thickness (外径*厚度). Rows include various pipe sizes like 10*2, 12*2, 14*3.5, etc.

Table with 3 columns: Outer diameter * wall thickness (外径*厚度), Outer diameter * wall thickness (外径*厚度), Outer diameter * wall thickness (外径*厚度). Rows include various pipe sizes like 168*7, 168*8, 168*9.5, etc.

产品规格

Product specification

钢号对照表/Steel grade comparison table

Comparison table of stainless steel brand and density in various countries. Includes sub-sections for Austenitic stainless steel, Ferritic stainless steel, and Martensitic stainless steel. Columns include No, 中国GB (Old/New brand), 日本 (JIS), 美国 (ASTM/UNS), 韩国 (KS), 欧盟 (BS EN), 德国 (DIN), 印度 (IS), 澳大利亚 (AS), 中国台湾 (CNS), and 密度 (density).

营销网络图 MAKRTING

